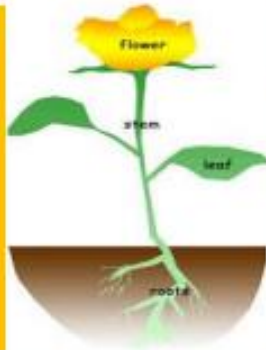


## Functions of the main parts of a plant



The main parts of a plant	<ul style="list-style-type: none"> <li>• <b>Flowers</b></li> <li>• <b>Leaves</b></li> <li>• <b>Stem</b></li> <li>• <b>Roots</b></li> </ul>
Flowers	<i>They have colour and smell to attract insects</i>
Leaves	<i>They change carbon dioxide and water into:</i> <ul style="list-style-type: none"> <li>• <i>Food for the plant</i></li> <li>• <i>Oxygen</i></li> </ul>
Stem	<i>They hold the plant up and carry water from the roots to the rest of the plant</i>
Roots	<i>They hold the plant in the ground and soak up water and minerals from the soil</i>

Sometimes plants bear fruits. Fruit is the part of the plant we often eat but its main job is to keep the seeds safe.



### How plants grow and survive

To grow and survive plants need:	<ul style="list-style-type: none"> <li>• Light</li> <li>• Water</li> <li>• Carbon Dioxide</li> </ul> <p>This is so that they can make their own food</p> <ul style="list-style-type: none"> <li>• Warmth</li> </ul> <p>This is because if plants get too hot or too cold they will die.</p>
How does a plant get water?	The roots take up water from the soil. The water travels through the stem of the plant to the leaves.

### Key Vocab

1	<b>Petal</b>	A way to describe something
2	<b>Stamen</b>	The male part of a flower containing pollen
3	<b>Carpel</b>	The female part of a flower containing an egg
4	<b>Fertilisation</b>	When pollen and an egg join together to make a seed
5	<b>Dispersal</b>	Spreading things over a wide area
6	<b>Pollen</b>	A powdery yellow substance from the male part of a flower
7	<b>Nectar</b>	A sweet fluid in flowers that attracts insects

## What jobs do they do?



### Roots

Where do we find the roots of a plant?

They grow underneath a plant, below the surface of the soil.

Roots are usually long and are covered in small hairs.

The roots anchor the plant in the ground.

They absorb water and nutrients from the soil.



### Stem or Trunk

What is a stem or trunk?

Branches, leaves and flowers grow from the stem or trunk.

A trunk is woody, and often has a layer of bark around it.

What job does it do?

The stem or trunk holds the plant up.

It also carries water and nutrients from the roots to the leaves.

## What jobs do they do?



### Leaves

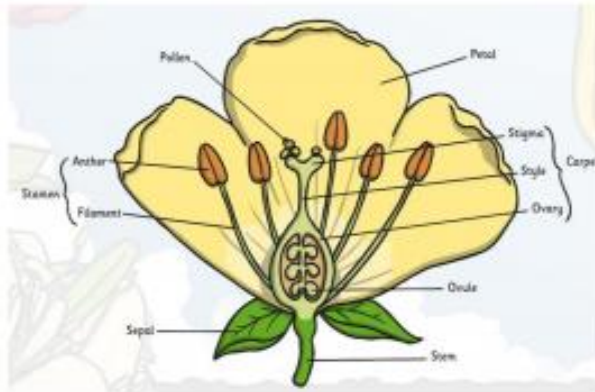
**What job do leaves do?**  
The leaves make food for the plant using sunlight and carbon dioxide from the air.



### Flowers

Flowers are brightly coloured to attract insects and birds.  
The insects carry pollen to other flowers.  
Flowers use the pollen to make seeds to grow new plants.

## Parts of a Flower



## The Importance of flowers

<b>The job of the flower</b>	The flower exists to make new plants The flower contains pollen and eggs which make seeds The seeds grow into new plants
<b>Parts of the flower</b>	Petal Stamen (the male part of a flower) Carpel (the female part of a flower)
<b>Pollination</b>	For a plant to grow a new seed, pollen needs to get to its carpel from another plant
<b>Fertilisation</b>	When the pollen joins the egg of the new flower a seed or many seeds are formed

## How does pollen get from one plant to another?

<b>Insects</b>	The insect goes to the first flower looking for nectar. Pollen gets stuck to it When it goes to another flower the pollen gets stuck to that flower
<b>Wind</b>	Pollen is blown from one flower to another



## How do the new seeds get to the soil to grow?

<b>Wind</b>	The seeds are blown by the wind
<b>Animals</b>	They are eaten by animals and pooped out
<b>Explosion</b>	Dry seed pods split open and shoot out the seeds

